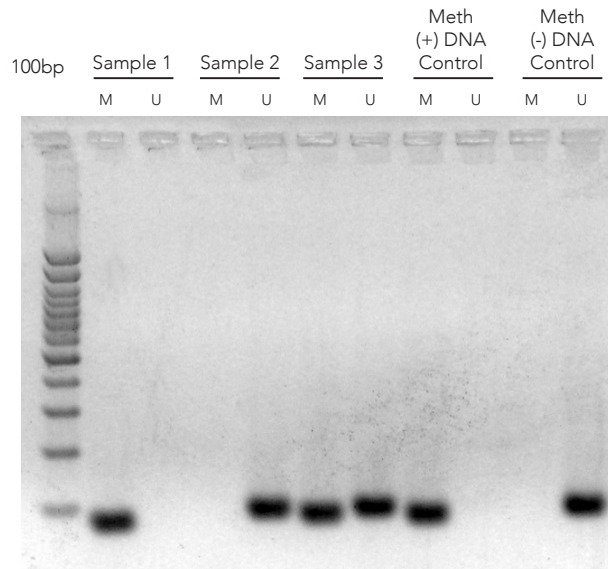


# Fully Methylated and Unmethylated Control DNAs

## Human Methylated & Non-Methylated DNA Set

- **Ideal Positive and Negative Controls:** DNA standards, purified from HCT116 DKO cell line, for use as positive and negative controls in methylation-detection applications including bisulfite PCR (BSP) and methylation-specific PCR (MSP) experiments.
- **Standard Curve Generation:** Completely methylated and non-methylated DNA can be mixed together in various proportions to generate a standard curve for suitable quantitation of DNA methylation in experimental samples.
- **Convenient:** Provided with control primers to amplify a fragment of DNA after bisulfite conversion.

### Ideal Controls for BSP and MSP Analysis



**Example MSP experiment using MSP designed primers for RASSF1.** Sample 1 is positive for a Methylated Template. Sample 2 is positive for a Non-Methylated Template and Sample 3 contains Methylated and Non-Methylated Templates. MSP experiment also shows proper controls: Meth (+) DNA Control D5014-2 Human Methylated DNA, Meth (-) DNA Control D5014-1 Human Non-methylated DNA. 2% Agarose Gel, 130V for 35 mins. M = Methylated specific primers, U = Non-Methylated specific primers

Product	Cat. No.	Size
Human WGA Methylated & Non-methylated DNA Set	D5013	1 set
Human Methylated & Non-methylated DNA Set	D5014	1 set