

AzureRed Fluorescent Protein Stain

Fluorescent total protein stain for gels and blots

AzureRed Fluorescent Protein Stain is a quantitative total protein stain for gels and blots with the sensitivity to detect less than 1 ng of protein per band or spot. Gels and blots stained with AzureRed can be imaged on any fluorescent imaging system, including laser- and CCD-based systems. Fully compatible with downstream Western blotting or mass spectrometry, AzureRed is non-toxic and biodegradable, for safe and simple disposal.

Features

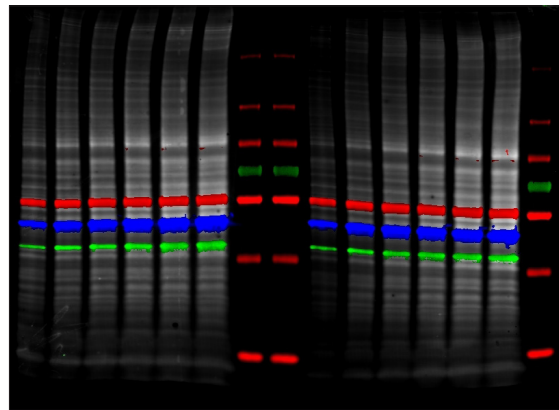
- **Sensitive** – detect less than a nanogram of protein per spot
- **Convenient** – simple 30 minute protocol for blots and 3 hour protocol for gels
- **Flexible** – stain gels or membranes
- **Reversible** – destain if desired for downstream analysis
- **No speckling** – clean background and no speckling for better data
- **Safe** – biodegradable and contains no heavy metals for increased safety and simple disposal
- **Compatible** – multiplex stained membranes with fluorescent Western blots for simultaneous detection of total protein and proteins of interest.



AzureRed Fluorescent Protein Stain is sensitive, quantitative, non-toxic, and fully compatible with downstream applications including Western blotting and mass spectrometry.

Total Protein Normalization

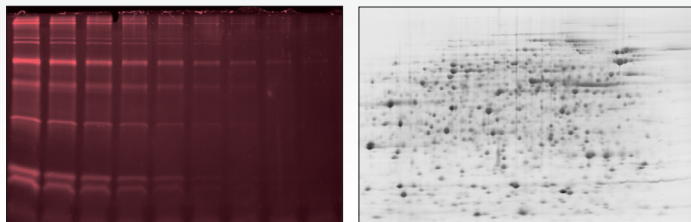
Use AzureRed as a fluorescent total protein normalization stain. The 30 minute membrane protocol produces superior linearity, sensitivity and reproducibility and is compatible with simultaneous Western blot detection.



A membrane was stained with AzureRed (gray) and probed for three different proteins using AzureSpectra secondary antibodies – AzureSpectra 490 – blue, AzureSpectra 700 – red, AzureSpectra 800 – green. The resulting fluorescent Western blot was scanned on a Sapphire Biomolecular Imager to detect all three proteins and the total protein stain simultaneously.

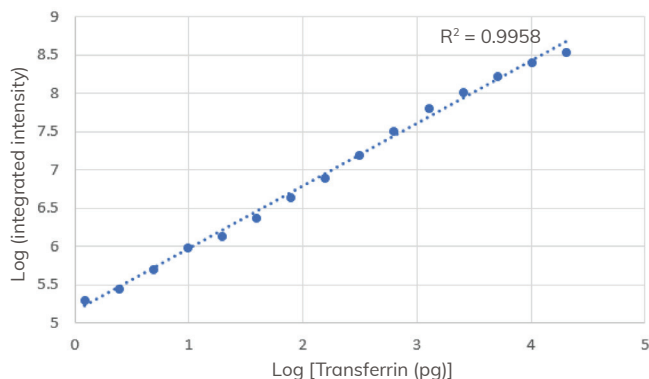
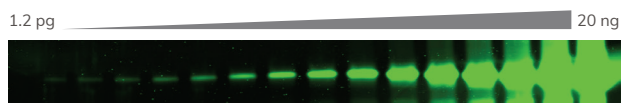
Stain 1D and 2D gels

AzureRed stains 1D and 2D gels in less than 3 hours, with high sensitivity, low background, and no speckling.



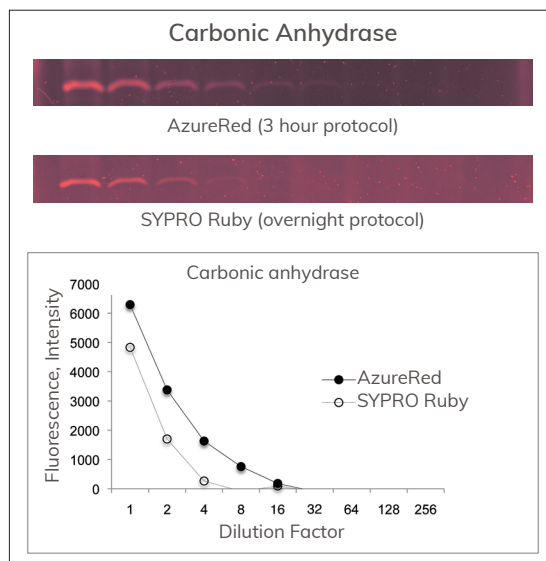
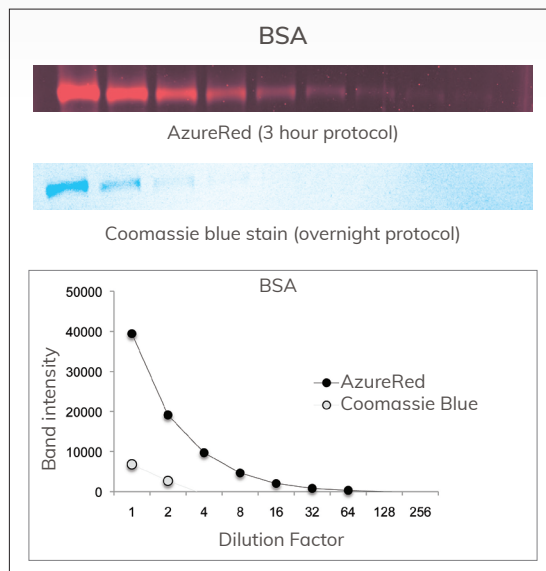
Quantitative staining with AzureRed

Gel containing a serial dilution of transferrin was stained with AzureRed and imaged with the 520nm channel of the Sapphire Biomolecular Imager. Less than 2pg of protein per band can be detected, and the signal is linear over more than 4 orders of magnitude.



High sensitivity, fast protocol

AzureRed outperforms both Coomassie blue and SYPRO® Ruby in time and sensitivity. Gels were stained with AzureRed, SYPRO Ruby, or Coomassie blue stain, according to the manufacturers' protocols and imaged on a cSeries imager.



Ordering information

Part Number	Name	Description	Size
AC2124	AzureRed Fluorescent Protein Stain	Fluorescent total protein stain for 1D and 2D gels – sufficient for 20 minigels	5 ml



www.azurebiosystems.com • info@azurebiosystems.com

Copyright © 2018 Azure Biosystems. All rights reserved. The Azure Biosystems logo and Azure Biosystems™ are trademarks of the Company. All other trademarks, service marks and trade names appearing in this brochure are the property of their respective owners.