

4. Sample loading.

You can use 10 μ l pipette tip to load samples into the wells easily. Make sure that the loading tip is inserted into the sample well vertically for optimum result and to avoid inserting the tip into the groove on the back plate.



5. Running conditions.

| Voltage | Started Current | Finished Current | Run Time per Gel |
|---------|-----------------|------------------|------------------|
| 140 V | 75-100 mA | 30-50 mA | 45-55 min |

The running time may be varied depending on your power supply and the gel percentage.

6. Open the cassette with an opener or a screw driver to remove the gel.

GenScript's eStain 2.0 Protein Staining System (Cat No. L02016) can help you to get better results.



Open the cassette with GenScript's opener or a screw driver.

For more support please call local office number or in the U.S., call 1-877-436-7274 (1-732-885-9188), also you can visit www.genscript.com

Guide for using ExpressPlus™ PAGE Gels, 10x8



1. Choose the appropriate gels for your protein electrophoresis analysis using the charts given below.

| Percentage | Separation Range |
|------------|------------------|
| 8-16% | 160-10 KDa |
| 4-20% | 250-10 KDa |
| 4-12% | 250-20 KDa |
| 8% | 180-20 KDa |
| 10% | 160-20 KDa |
| 12% | 120-6.5 KDa |

| wells | volume/well |
|-------|-------------|
| 10 | 80 μ l |
| 12 | 60 μ l |
| 15 | 40 μ l |



2. Prepare gel tank and buffer. Using MOPS or MES buffer for PAGE running buffer (Cat No. M00138).

★ Compatible gel tanks:

Bio-Rad Mini-PROTEAN (II/ 3/ Tetra System) Hoefer Mighty Small (SE 250/ SE 260)

| Sample preparation | Reagent | Volume |
|--------------------|----------------------------|--------------|
| | Protein sample | x μ l |
| | 5 \times loading buffer | 2 μ l |
| | Deionized H ₂ O | to 8 μ l |
| | Total Volume | 10 μ l |

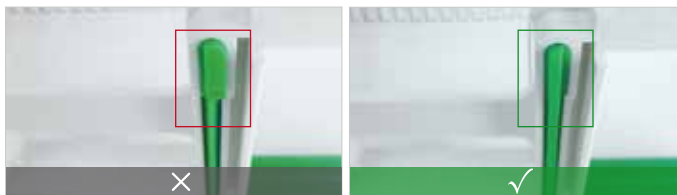
SDS-PAGE:
Heat the sample at 100°C for 10 min, spin down sample before loading.

Native PAGE:
Don't heat the sample.

3. Peel the tape at the bottom of the gel plate, remove the comb gently, then insert the gel into the gel running apparatus and add running buffer.



Turn around the gasket to fit the gel plate when using Bio-Rad's gel tanks ↓



Adapters provided in the gel package are needed since the thickness of Express Plus PAGE Gel cassette is smaller than that of Invitrogen NuPAGE gel cassette.

